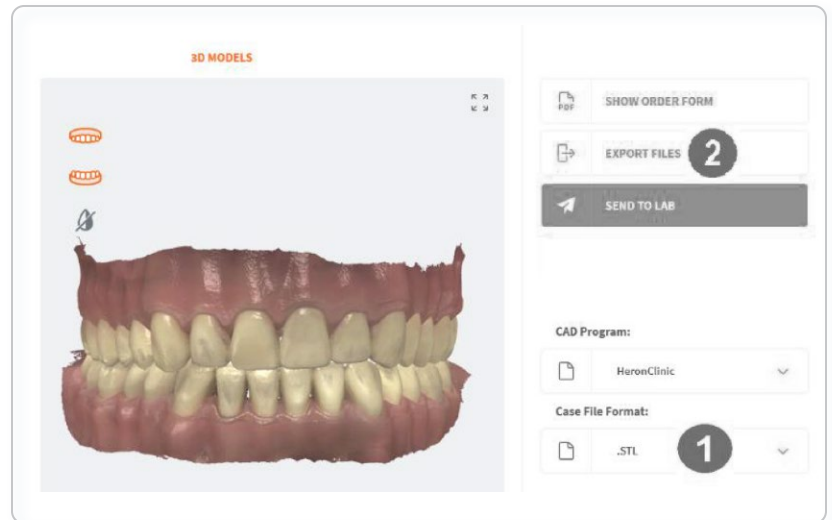




3Disc HeronClinic .STL Export Workflow Steps

INSTRUCTIONS

1. Go to the review step for the patient.
2. Verify that the case file format is set to .STL
3. Then click on the export files button
4. If no export location has been set under the setting, then you will be asked to select an export folder. Otherwise, the files will be exported to the predefined location



NOTE: Depending on what was scanned you will find 4 .STL files in the directory. If you have completed two bite scans you will have the corresponding .STL files for each bite

Name	Type
2022-04-19-004012-maxillary.stl	STL File
2022-04-19-004012-mandibular.stl	STL File
2022-04-19-004012-bite-opposing.stl	STL File
2022-04-19-004012-bite.stl	STL File

5. Login to your DDX Account

DDX DIGITAL DENTAL EXCHANGE

Invite a Colleague Help Dr John Doe Heron Dental

Go To My Partner New Task Search

Login

Login as Dental Practice

Email john.doe@heron-dental.com

Password

Security

☐ This is a public or shared computer

☐ This is a private computer

Login

Lost your password?

Don't have a DDX account? Sign Up

Terms of Use Comments or Suggestions

Copyright 2021 Labnet Dental Lab Systems — All Rights Reserved Powered by DDX

6. Select New Case

DDX DIGITAL DENTAL EXCHANGE

Invite a Colleague Help Dr John Doe Heron Dental

Portal Go To My Partner New Task Search

My Portal

Calendar Calendar Month Filter: Last Week 2021-05-01 to 2021-05-09 Next Week

Activity Log No events to display

7. Enter all required patient information and details in the work request form

Portal Reveal Aligner Lab Cases Finances New Task Search

Schedule a New Case

Patient Information

Provider Dr John Doe Gender

First Name Chart Number 12345 Test Case

Last Name Birth date mm/dd/yyyy

Work Requested

Reveal Clear Aligners Standard, Lite, or Express Package Remove Procedures

Primary Concern

Chief Complaint

Case Properties

Impression Type Treatment Steps Lab to Recommend

Arch Development

Archform Width Optimize Midline Optimize

A-P Relationship

A-P relationship: Right Canine Optimize Class I Overjet / Underbite Optimize

A-P relationship: Left Canine Optimize Class I Overbite Optimize

A-P relationship: Right Molar Maintain Crossbite Optimize

8. Under Case Files, select the upload button to add scan files from your desktop folder

The screenshots illustrate the steps to upload files to the DDX File Uploader interface:

- The first screenshot shows the 'Enclosures' tab with 'Case Files' selected. The 'Upload' button is circled in red.
- The second screenshot shows the 'Case for Reveal Aligner Lab Uploads' page. The 'Select Files to Add' button is circled in red.
- The third screenshot shows a Windows File Explorer window. The 'Video Win Movie Maker' folder is circled in red.
- The fourth screenshot shows the upload progress for four files. The '562021-DDX aligner test-upperjaw.stl' file is currently uploading.

9. The uploaded files will appear as thumbnails under the Case Files section. Enter the notes relevant to your patient, check to accept terms & conditions before submitting your aligner case.

The screenshot displays the Labnet Dental Lab Systems interface. At the top, the 'Case Files' section shows four uploaded STL files: '562021-DDX aligner test-lowerjaw_1.stl', '562021-DDX aligner test-occlusionfirst_1.stl', '562021-DDX aligner test-occlusionsecond_1.stl', and '562021-DDX aligner test-upperjaw_1.stl'. Below this is the 'Notes' section, which includes a text area for patient notes, a 'Send Date' field set to '05/06/2021', a 'Try-In' button, an 'Emergency' button, and dropdown menus for 'Tags' and 'Coupon Code'. At the bottom of the 'Notes' section, there is a checkbox labeled 'I accept all Terms and Conditions' and two buttons: 'Submit Case' and 'Save Draft'. The footer of the interface includes 'Terms of Use', 'Comments or Suggestions', 'Copyright 2021 Labnet Dental Lab Systems -- All Rights Reserved', and 'Powered by DDX'.