



Free Scan Data

MatchApp

Basic Manual ■





INDEX.

Chapter 01. Table of Contents	02	Chapter 07. Move Steps	11
Chapter 02. Introduction	04	Chapter 08. Match the Upper Jaw and the Bite	12
Chapter 03. Select File Type	05	Chapter 09. Open the Lower Jaw Scan Data and the Face Scan Data	14
Chapter 04. Basic Action	06	Chapter 10. Export Files	16
Chapter 05. Open Bite Scan Data	08	Chapter 11. Adjust Opacity	17
Chapter 06. Match Data	09	Chapter 12. Start Again	17



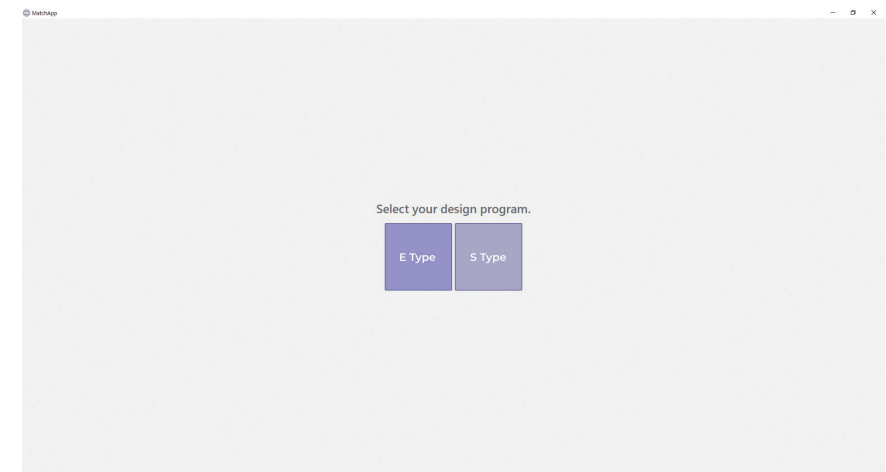
INTRODUCTION.

MatchApp is a program that converts and outputs a CAD coordinate system by matching the upper and lower jaw scan data and the bite scan data.

The output data matches the face scan data obtained from SNAP. It is divided into three stages which are bite plate and bite scan data matching, the upper jaw and bite scan data matching, and confirmation and output. In the final stage, import the lower jaw scan data and the face scan data and check that all the data match at the appropriate location. The final result can be output to a file of the matched upper and lower scan data.

SELECT FILE-TYPE.

■ Select File Type



A screen as shown above is appeared after running the program. This step is to select the type of the file to be output after completing the matching process. Once the setting is completed, the step of selecting the file type is omitted. You can change the file type by clicking the Setting icon.

E Type

A file for exocad is created. Face data is output in OBJ format.

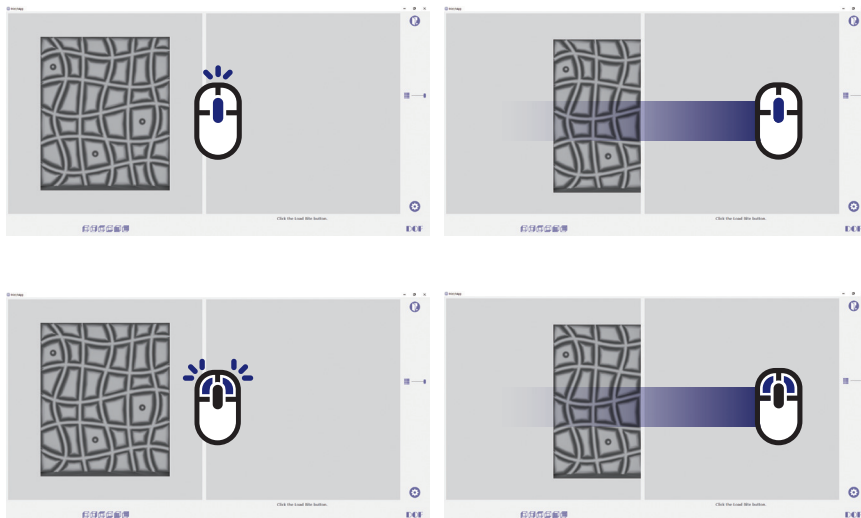
S Type

A file for 3shape is created. Face data is output in PLY format.

BASIC ACTION

■ Parallel Movement

Click and drag the screen to be moved with the mouse wheel button (or both buttons), the camera moves in parallel as much as the mouse movement distance.



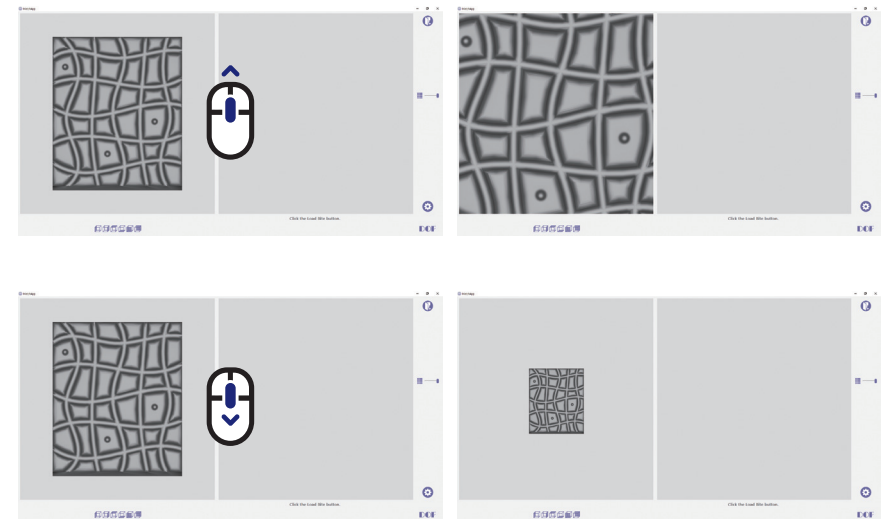
■ Rotative Movement

Click and drag the screen to be rotated with the right mouse button, the camera rotates as much as the mouse movement distance.



■ Zoom in and Zoom out

Zoom in or zoom out the object by scrolling the mouse wheel button as much as the distance of the wheel.

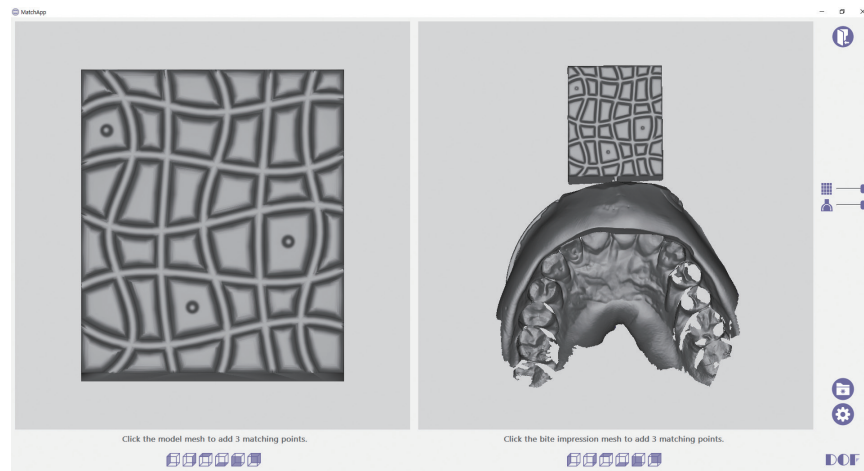


OPEN BITE SCAN DATA

■ Open Bite Scan Data



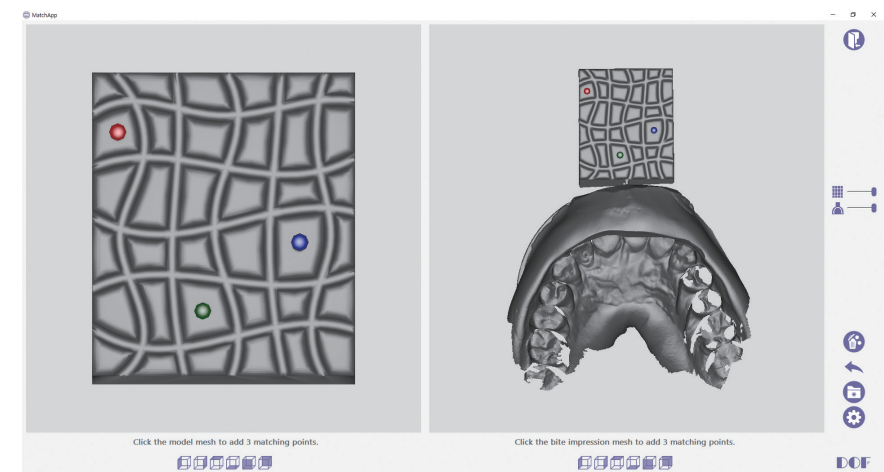
At the first stage of matching, click open file and bring the scan data file.
The loaded bite scan data is displayed on the right screen.



MATCH DATA

■ Add Points

Click the left mouse button to add three points each at the same location of the left data and the right data.




■ Delete Points




Deletes all points added to both screens.

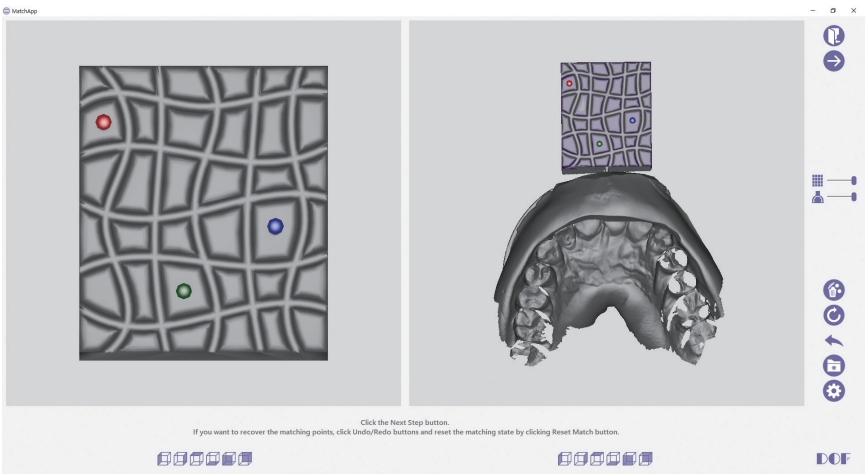
■ Return and Restore the Points

 Return to the added points.

 Restore the points to the last action.


■ Matching initialization

 Initialize the matching status.
Matched data is displayed on the right screen.




MOVE STEPS.

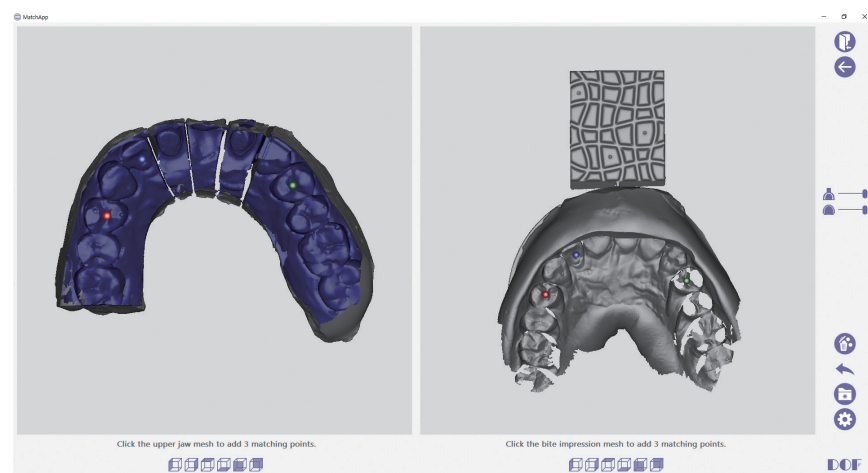
■ Next Step

 Go to the next step.

■ Previous Step

 Go back to the previous step.

MATCH THE UPPER JAW AND BITE.



Press the File Open button to open the upper jaw data at the second step and it will appear on the left screen. After arranging the upper jaw data and bite scan data as shown on the screen, add matching points each at the same location.



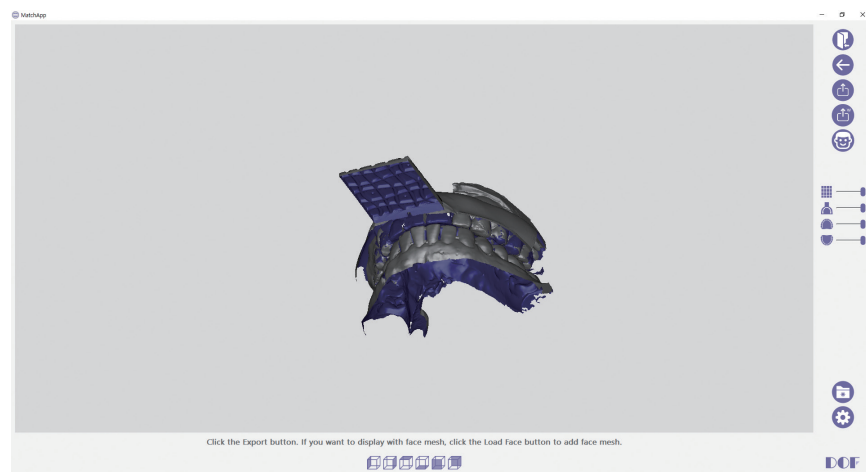
By clicking on 3 points, you may see that the points will automatically match the data. Go to the next step after checking the matching is in the correct position. If the matching is not successful, click the Revert button to proceed matching again.

OPEN THE LOWER JAW SCAN DATA AND THE FACE SCAN DATA ■

■ Open the Lower Jaw Scan Data



Click on Open File button to open the lower jaw scan data.



■ Open the Face Scan Data



Click Open Face scan file to load the face scan data as needed.



EXPORT FILE ■

■ Export a File



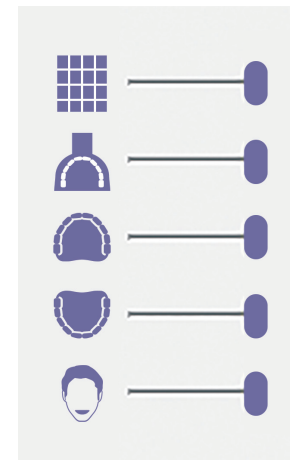
By clicking Export file, and selecting the save location, and the matched upper and lower jaw scan data and face scan data are output to the folder.

■ Overwrite an Existing File



By clicking overwrite existing file, it will load the existing data file from its location and overwrite the data. Face scan data is output with the file name changed to match the existing project folder name.

ADJUST OPACITY ■



■ Adjust Opacity

Adjust the mesh opacity of each data (bite plate, bite scan data, upper jaw scan data, lower jaw scan data, face scan data (smile), face scan data (Mouth Open)) in order from top to bottom. Drag the slider bar to adjust.

START AGAIN ■

■ Start Again



All steps are initialized and start a new project by clicking the new project button.



doflab.com

DOF Inc. #601-602, 77, Seongsuil-ro, Seongdong-gu, Seoul, 04790 Korea (070-5057-3518)

Copyright © 2020 DOF Inc. All rights reserved.

Design and specifications are subject to change without notice to improve performance.